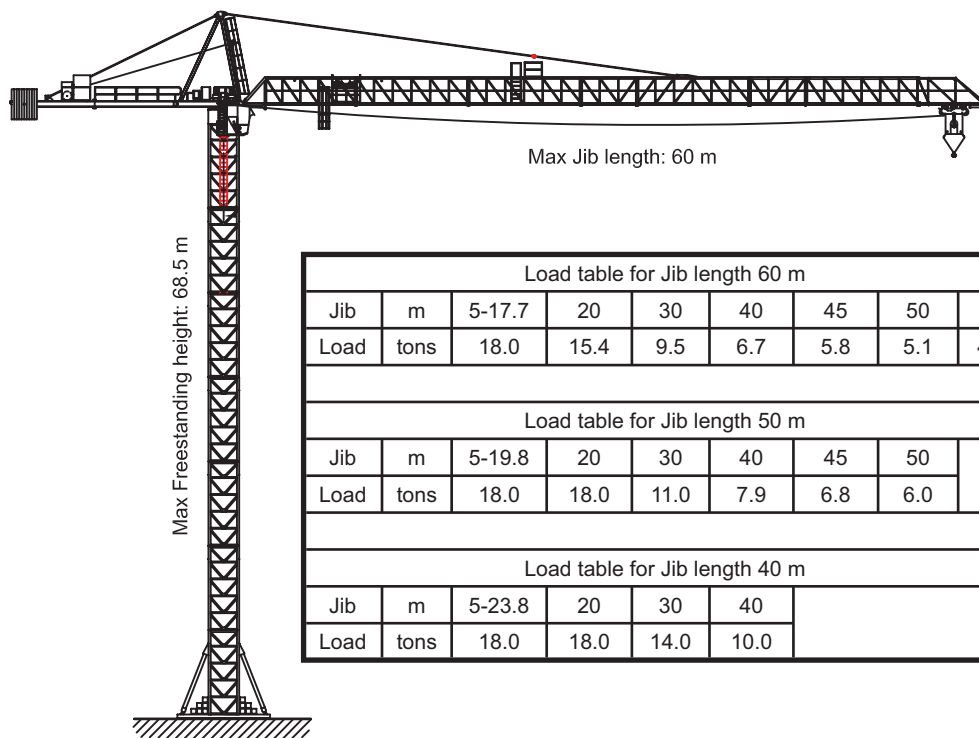


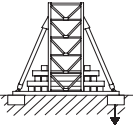
# KROLL TOWER CRANE K400

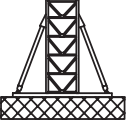



TRADEHOUSE Int. A/S  
 Poppelgaardvej 7, DK 2860 Soborg  
 Tel: +45 3966 1866, Fax: +45 3966 1065  
 mail: lohmann@tradehouse.dk  
 www.tradehouse.dk


### Kroll Tower Crane K400 D

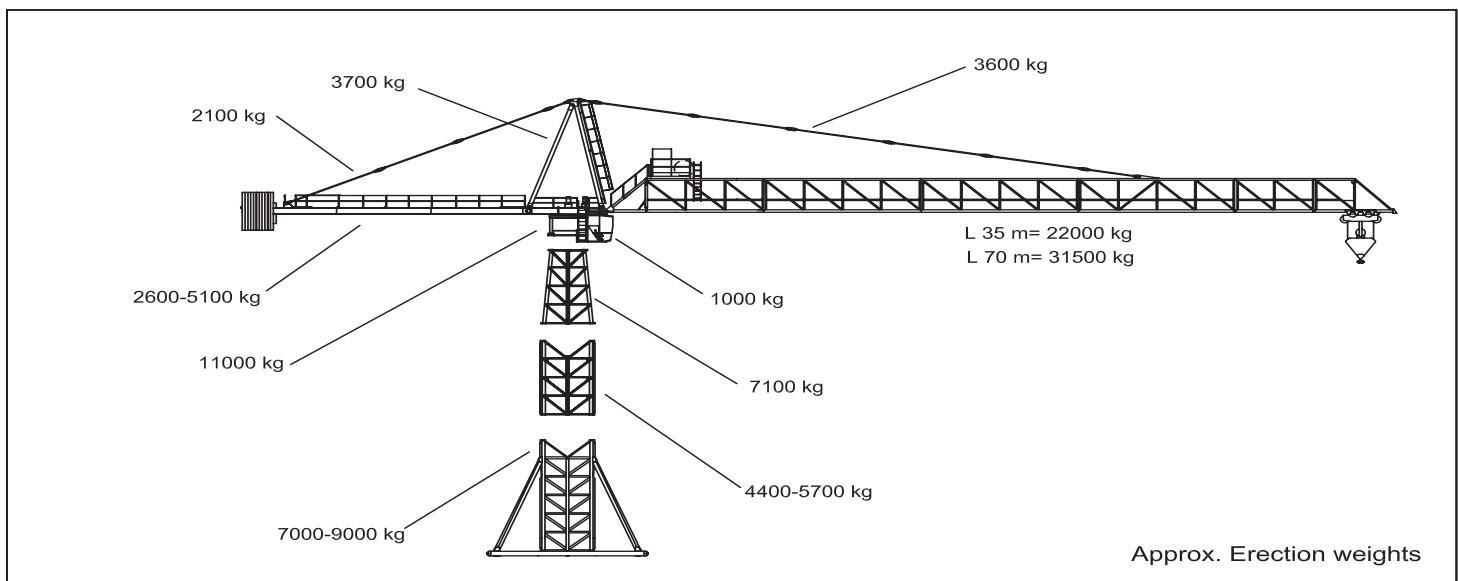
<b>Hook height</b>	m	92	86	80	74	68	62	56	50	44	38	32	26	20	14
--------------------	---	----	----	----	----	----	----	----	----	----	----	----	----	----	----

	Erected on bottom cross on single foundations																
	Ballast		ton	150	150	150	145	102	64	40	40	40	40	40	40	40	40
	Corner pressure	In Service	kN	1710	1610	1540	1450	1280	1130	1040	960	920	880	840	800	770	740
	Corner pressure	Out of Service	kN	2670	2420	2180	1950	1630	1370	1120	900	760	640	580	570	560	550


	B x B x H; H= 1.2 m		Erected on bottom cross on foundation plate														
	B		m	11.9	11.4	10.8	10.2	9.8	9.6	9.6	9.6	9.6	9.6	9.6	9.6	9.6	9.6
	Foundation volume		m <sup>3</sup>	170	155	140	125	115	96	96	96	96	96	96	96	96	96
	Foundation weight		ton	408	375	335	299	276	221	221	221	221	221	221	221	221	221

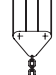
	Erected on bottom cross for rail travelling																
			m	Rail gauge= 9 m													
	Ballast		ton	140	122	106	91	77	64	53	44	40	40	40	40	40	40
	Corner pressure	In Service	kN	1850	1920	1720	1620	1470	1340	1230	1120	1030	960	910	860	820	780
	Corner pressure	Out of Service	kN	2720	2460	2230	1980	1670	1390	1120	910	780	670	600	580	570	560

	B x B x H; H= 1.8 m		Erected on cast in section														
	Hook height		m	83	77	71	65	59	53	47	41	35	29	23	17	11	
	B		m	10.7	10.1	9.6	9.0	8.5	7.9	7.4	7.3	7.1	7.0	6.9	6.8	6.7	
	Foundation weight		ton	495	441	398	350	312	270	237	230	218	212	206	200	194	



	81 kW
	145 kVA

	0—4.000 kg	0—m/min
	0—10.000 kg	0—40 m/min

	0— 8.000 kg	0—40 m/min
	0—20.000 kg	0—20 m/min